

Lightsource Test Report

Product Infomation

Product Category: LED STRIP	Product Type: LED STRIP
Product Spec: BILY 5	Product Number: 303
Manufacturer: TECSOLEED S.L.	Buyer: TECSOLEED S.L.

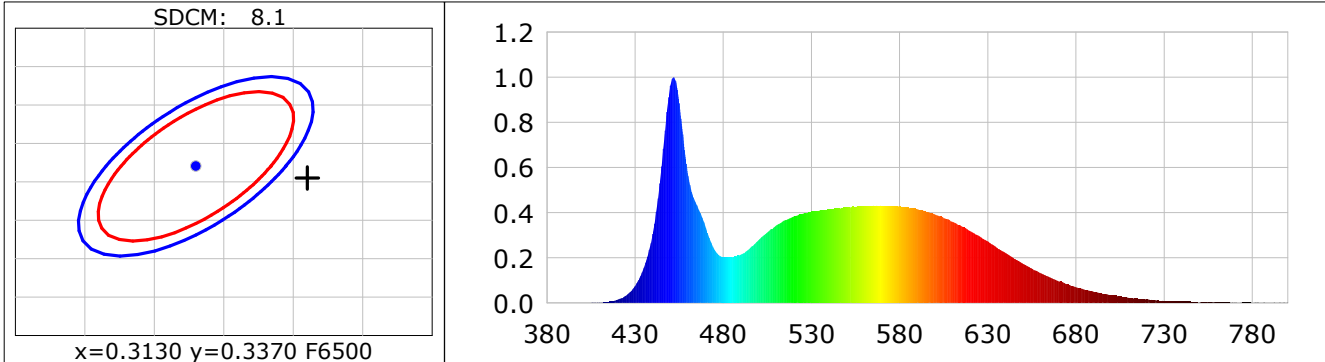
CIE Colorimetric Parameters

Chromaticity coordinates: $x=0.3210$ $y=0.3355$ $u(u')=0.2012$ $v=0.3153$ $v'=0.4730$
 CCT: $T_c=6040K$ ($duv=0.00242$) Color Ratio: $R=0.141$ $G=0.806$ $B=0.053$
 Peak Wavelength: 451.7nm Half Bandwidth: 18.2nm
 Dominant Wavelength: 504.4nm Color Purity: 0.040
 CRI: $R_a=83.2$, $avgR(1\sim14)=75.9$, $avgR(1\sim15)=76.0$ TM30: $R_f=82$, $R_g=95$
 GAI: $GAI_BB_8=91.3$, $GAI_BB_15=97.0$, $GAI_EES=87.0$

R1 =82	R2 =88	R3 =91	R4 =83	R5 =82	R6 =83	R7 =88	R8 =69
R9 =9	R10=71	R11=82	R12=56	R13=84	R14=95	R15=78	

 Color Quality Scale: $Q_a=80.7$, $Q_f=80.5$, $Q_p=81.2$, $Q_g=91.9$

Q1 =84	Q2 =98	Q3 =76	Q4 =70	Q5 =77	Q6 =81	Q7 =86	Q8 =90
Q9 =96	Q10=86	Q11=81	Q12=81	Q13=81	Q14=71	Q15=76	



Photometric Parameters

Luminous Flux: 1141.9 lm	Efficiency: 129.79 lm/W	Radiant Power: 3.600 W
Total mains efficacy: 120.19 lm/W	Energy Efficiency Class: E (EU 2019/2015)	

Electric Parameters

Voltage: 24.000V	Current: 0.3666A	Power: 8.80W
Power Factor: 1.0000	Frequency: 0.00Hz	

Test Infomation

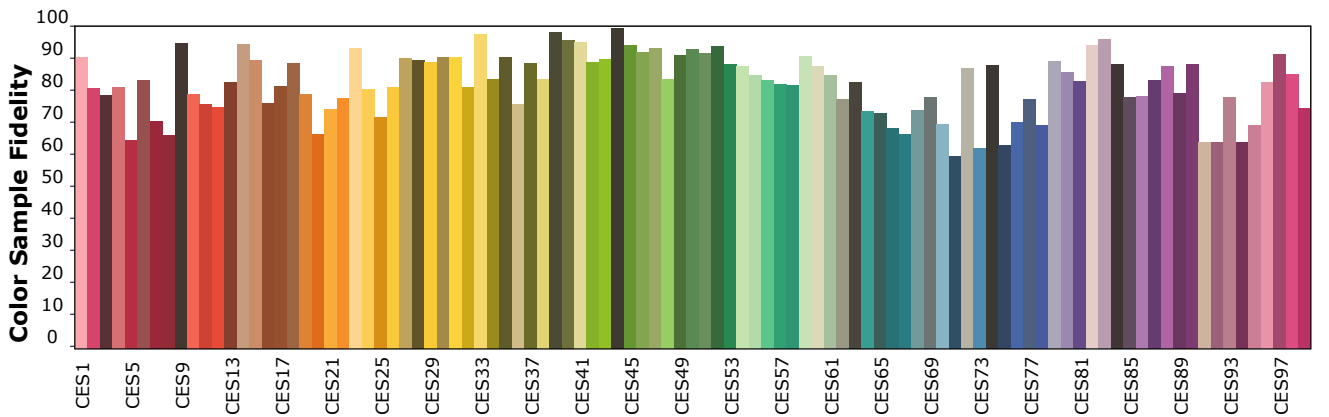
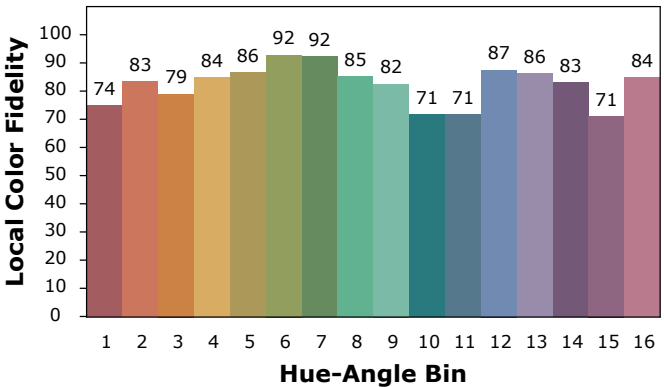
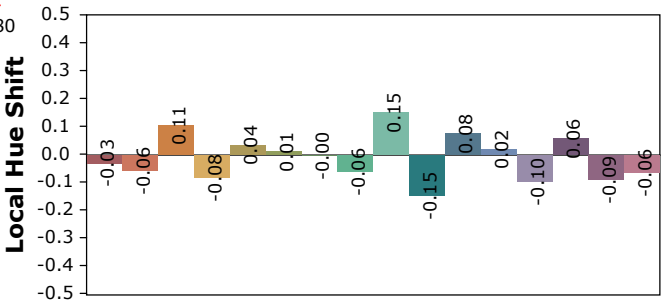
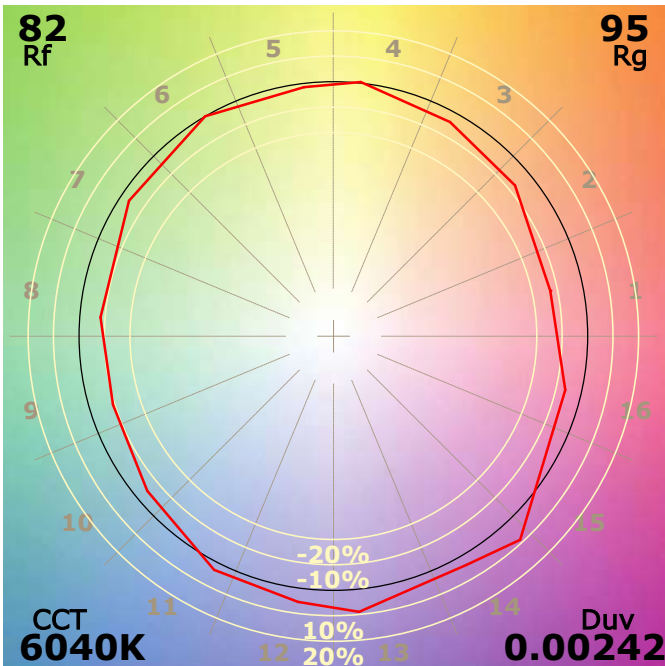
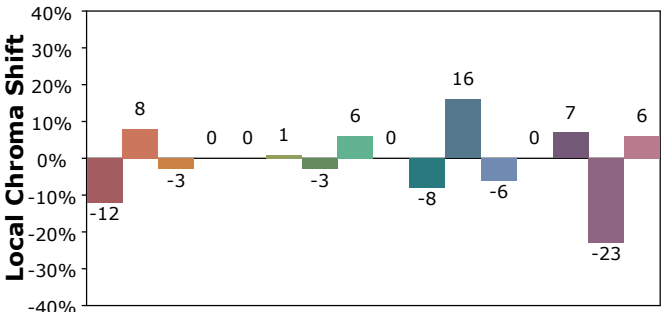
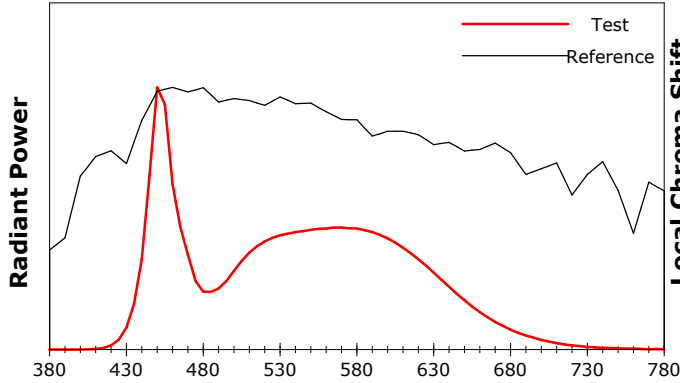
Scan Range: 380~800:1nm	Photometric Method: sphere-spectroradiometer
Stabilization Time: 0 Sec ALC.: 1.0000	Photometric Condition: Sphere diameter: 1.50m, 4PI
Max of Signal: 46742 (2114)	CCD Integration Time: 279.04 ms

IES TM-30-18 Color Rendition Report

Product Information

Product Category: LED STRIP
 Product Spec: 21059602440565
 Manufacturer: TECSOLED S.L.

Product Type: LED STRIP
 Product Number: 303
 Buyer: TECSOLED S.L.



Condition: Tx:19.3°C, Ti:18.4°C, R.H.:60%
 Test Lab: TECSOLED S.L.
 Operator: JORDAN GIL DIAZ

Test Device: Inventfine CMS-2S (Plus)
 Test Time: 2021-11-02 10:09:38
 Inspector: